

Print Monitoring and Control

Cut the cost of printing

PaperCut is the easy way to automatically monitor and manage printing in your organization, giving you control over your costs and environmental impact.

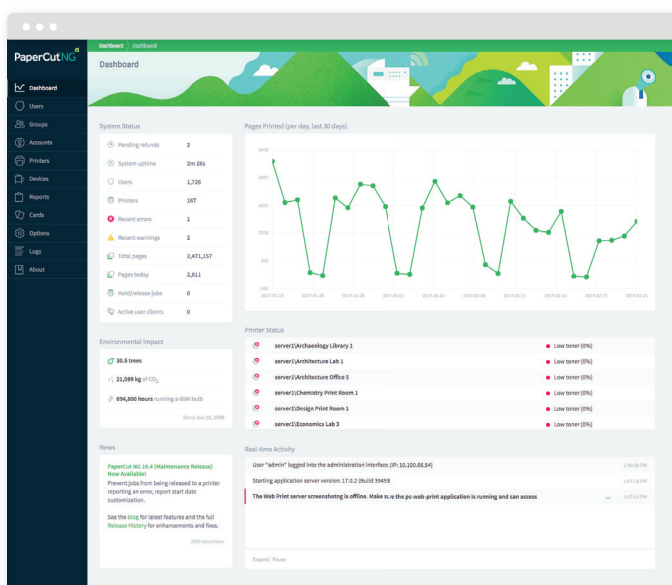
The PaperCut software checks print jobs on the print server and analyzes them, applying rules to enforce your print policies.

PaperCut gives you full control over your fleet of devices, letting you:

- ▶ Manage and control printing using tracking, quotas or pay-for-print charging.
- ▶ Support BYOD and mobile device users print from their own device.
- ▶ Apply rules based print policies to minimize waste and maximize productivity, e.g. to prevent printing of emails, require large jobs to be duplexed or restrict color printing.
- ▶ Monitor your print fleet, with toner level detection and printer error alerts by email or SMS.
- ▶ Monitor your print jobs with thumbnail style viewer.

PaperCut Features at a Glance

- ▶ Fully cross-platform, supporting all major operating systems, including mixed environments
- ▶ Scalable to networks of all sizes, from five to 500,000 end users
- ▶ True enterprise-wide license with no limits on the number of servers, workstations, printers, operating systems or domains
- ▶ Match your organization's look and feel with seamless integration with your intranet
- ▶ Modern software under active development
- ▶ Simple to use browser based administration
- ▶ Used by more than 50,000 organizations in 100+ countries



Supported Platforms

More Features of PaperCut...

For Financial Controllers

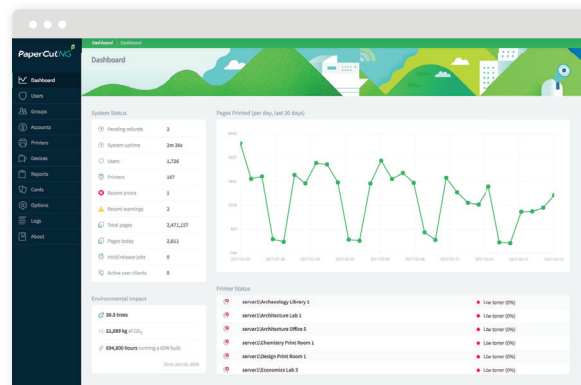
- ▶ Detailed reporting of output and costs by user and printer
- ▶ Track and allocate costs back to a department, cost centre, faculty or client
- ▶ Simple to use and find the information most needed
- ▶ Cut printing costs whilst improving work flow

For System Administrators

- ▶ **Simple installation**
Deploy centrally on your server and track all printing. Client software is optional and not required for basic print tracking
- ▶ **Fast, intuitive user setup**
Automatically manage end users known to directory services such as Active Directory and LDAP
- ▶ **Solve mobile & BYOD printing**
Allow users to print from whatever BYOD or mobile device at their disposal. No matter the operating system, their location, the file format or the brand of printer we have simple solutions to solve all these. All solutions integrate into PaperCut's standard print charging/accounting/quota process

- ▶ **Shared accounts**
Users can easily allocate job costs to departments, cost centers, clients or projects with popup client software
- ▶ **Full logging and reports**
Over 50 one-click reports in standard formats (PDF, CSV, HTML)
- ▶ **Database integration**
Use the in-built database or configure to use your existing databases (MS SQL Server, Oracle, MySQL, PostgreSQL)
- ▶ **Watermark every print**
Automatically add a username or other information to the bottom of every page
- ▶ **Digital signatures**
Watermark all jobs with a digital signature to track document origin/source

- ▶ **Hold/release queue**
Release sensitive documents at point of printing
- ▶ **Delegate administration rights**
Grant specific rights by functional areas
- ▶ **Intranet integration options**
And fully documented API and scripting interface
- ▶ **Print Archiving**
View print job content interactively in the browser.



System Activity at a Glance

This view allows administrators to review individual print jobs. Each entry includes a thumbnail of the document, the user name, the printer used, the department, the number of pages, the cost, the document name, the print date, and the status (e.g., 'Printed', 'Failed').

Print Archiving Thumbnail View

The Mobility Print interface is designed for user-friendly BYOD printing. It features a 'Mobility Server' status indicator showing it is 'Working' and 'waiting to receive print jobs'. Below this, it lists 'Publishing 64 Printers' and provides options for 'Discoverable via Local Subnet' and 'SMB Options'. At the bottom, it displays icons for supported operating systems: Mac OS X, Apple iOS, Windows, ChromeOS, and Android.

Mobility Print for simplified BYOD printing

The 'Physical printer usage - summary' report provides a detailed breakdown of printer performance. The table below summarizes the data shown in the screenshot:

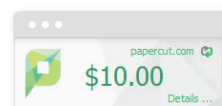
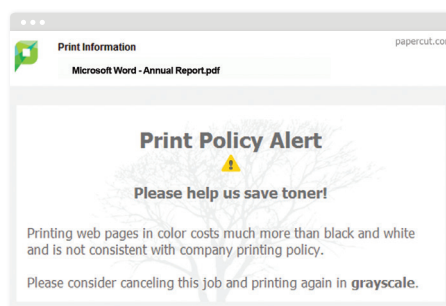
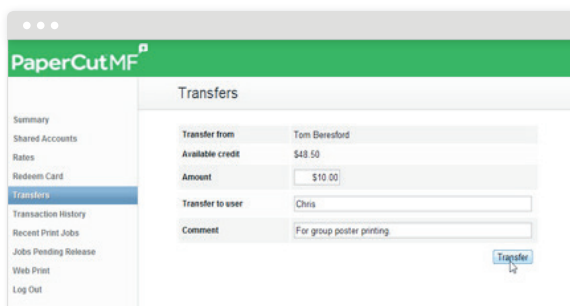
Physical Printer Identifier	Printer Type/Model	Total Printed Pages	Jobs	Cost
[Redacted]	HP Color LaserJet 2600	1,483	441	\$307.75
[Redacted]	hp color LaserJet 1005	37	35	\$24.25
[Redacted]	HP Color LaserJet cm1312d MFP	1,539	446	\$382.25
[Redacted]	HP Color LaserJet cm1312d MFP	91	28	\$82.75
[Redacted]	HP Color LaserJet cm2320d MFP	4,692	1,378	\$1,172.50
[Redacted]	HP Color LaserJet CM4040 MFP	710	134	\$173.50
[Redacted]	HP Color LaserJet CP2025 Series	1,401	365	\$320.25
[Redacted]	HP Color LaserJet e52525dn	772	258	\$182.50
[Redacted]	HP DesignJet 5140 Color Printer	3	3	\$2.75
[Redacted]	HP LaserJet 1300	1,067	268	\$256.75
[Redacted]	hp LaserJet 1300	56	15	\$14.00
[Redacted]	hp LaserJet 1300n	7,817	2,308	\$1,854.25
[Redacted]	hp LaserJet 1300 series	2,159	605	\$338.75
[Redacted]	HP LaserJet P3010 Series	12,754	4,000	\$3,438.50
[Redacted]	Lexmark CS42 9612HP+ LLLAS/P207p	495	139	\$125.75

Comprehensive Built-in Reports

For End Users

- ▶ **Intuitive, customizable web interface** shows usage tracking, or runs silently
- ▶ **Optional client software** offers authentication, confirmation of print job cost, account balances and cost allocation
- ▶ **Shows usage and impact** by tree or by CO₂ volume

- ▶ **Show popups prompting users** on situations such as not printing jobs duplex, attempting to print emails, or suggestion to print grayscale when printing from a web browser
- ▶ **Flexible payment options** for pay-for-print including pre-paid voucher cards and online payment gateways
- ▶ **Deployment flexibility** with options for highly visible quota or charging control
- ▶ **Mobile Print Release** allows you to release your job at the copier with any modern smartphone



Intuitive Browser-based End User Interface

Papercut in Action

User Management

Automatic User Import

PaperCut automatically synchronizes user accounts with leading directory services such as Active Directory, Open Directory, LDAP, eDirectory, etc. Import end user details from:

- ▶ The full domain
- ▶ A selected group within a domain
- ▶ An organizational unit
- ▶ A spreadsheet

Page-level Color Detection

Use the advanced charging interface to enable page-level color detection. This "looks" at each page of a document and detects the use of color. End users are only charged the color rate on pages that have color, providing a more precise charging method

Advanced Filtering and Restrictions

Use PaperCut's job filtering and/or advanced scripting control to implement print policies and improve device utilization. Options include:

- ▶ Route large jobs to dedicated high-volume printers
- ▶ Ask end users to confirm single sided output
- ▶ Delete duplicate jobs or those with incorrect paper sizes automatically

- ▶ Discourage printing of emails via popup warnings
- ▶ Enable limited free printing during class times
- ▶ Suggest alternate printers when a device is offline
- ▶ Build your own rules with advanced print scripting.

By combining PaperCut's filter rules, administrators can improve printer use, minimize queue hogging, and avoid wasteful print jobs. For more advanced control, use print scripting. PaperCut includes dozens of pre-built recipes and a simple JavaScript IDE to help you build your own scripts.

One Click Reporting

PaperCut offers more than 50 reports out of the box, in PDF, HTML or Microsoft Excel (.csv) format. Access reports from any web browser, or schedule them to be automatically generated and emailed. You can set up reports to use your own header, and create reports with custom data by specifying date ranges, filtering and sorting by the data available.

Local and Server Printers

PaperCut can track printing on multiple servers and locally attached desktop printers. Web Print – a unique feature of PaperCut – enables wireless printing for laptop and netbook users and requires no installation of print drivers or server authentication.

PaperCut works seamlessly in heterogeneous environments – you can host some printers on Macintosh or Linux, and others on Windows and have them all working together as one system without the need for separate licensing.

Technical Specifications

Scalability:

- ▶ Suitable for networks of 5 to 500,000+ users

Architecture:

- ▶ Single server or multi-server environments
- ▶ Monitor locally attached printers
- ▶ Client software is optional
- ▶ Available in 20+ languages and currency formats world-wide

Licensing:

- ▶ Licensed based on number of end users
- ▶ Unlimited printers, servers, and workstations

Open Systems:

- ▶ Open documented database schema
- ▶ XML Web Services API with sample code

Supported Server Operating Systems:

- ▶ Microsoft Windows Server 2016 / 2012 / 2012 R2 / 2008 / 2008 R2 / 2003 SP2, Windows 10, Windows 8, Windows 7, Windows Vista (64bit & 32bit versions where applicable)
- ▶ Mac OS X Server (10.8 or higher)
- ▶ Most modern Linux distributions including Red Hat 6.0+, Novell SUSE 11.0+, Debian 6.0+, and others (requires GNU glibc 2.11 or higher)
- ▶ Novell Open Enterprise Server 2 Linux (OES 2 SP1, SP2 (with hotfix applied) or SP3) and Novell OES 11
- ▶ Most modern cluster infrastructure

Supported User Directory Services:

- ▶ Active Directory (native integration including nested groups and OU's)
- ▶ OpenDirectory
- ▶ eDirectory
- ▶ LDAP
- ▶ NIS, PAM, Samba, and others.

Supported Workstation Operating Systems:

- ▶ Microsoft Windows (any current editions)
- ▶ Mac OS X (10.4 or higher)
- ▶ Linux (any modern distribution)
- ▶ Unix Workstation (Java required to run client software)

Printers:

- ▶ Almost all major laser, inkjet, label and wide-format printers.
- ▶ Supported print languages: PCL, PCL6, HPGL, Postscript, PCL-GUI, Ricoh RPCS, Epson ESC, QPDL, various GDI printers and many language that don't even have names.

Supported Database Servers:

- ▶ Self managing internal database: suitable for up to 5,000 end users
- ▶ Microsoft SQL Server 2000/2005/2008/2008R2/2012/2014 or later (either 32 or 64 bit)
- ▶ Microsoft SQL Express 2005/2008/2012/2014 or later (free from Microsoft)
- ▶ PostgreSQL 7.1 or higher
- ▶ MySQL 5.5 or higher
- ▶ Oracle 9.2 or higher

Encryption:

- ▶ SSL encryption used for sensitive client server communication.

Vendor Neutral System

PaperCut NG is a vendor neutral solution. It has a robust API that can be used by programmers to automate functions and interface with third party systems. The system is designed using open standards and supports all major server and workstation operating systems.

All versions of PaperCut for all operating systems are generated from one code base so new features and improvements are available simultaneously on all platforms. PaperCut is supported directly by its developers, a friendly and approachable team.

Download and
install your **FREE**
no obligation
40 day trial now



PaperCut
Reseller

email@yoursalesemailaddress.com
www.yourwebaddress.com